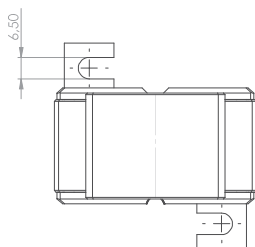
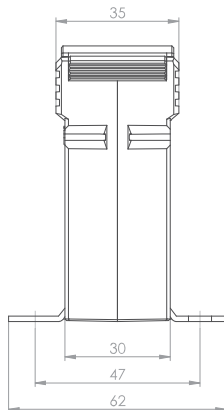
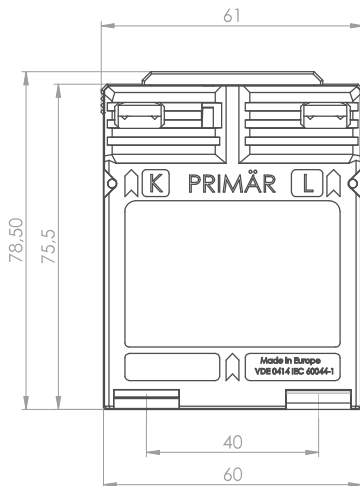


WSK 30

Wickel-Stromwandler



Baubreite 61 mm
 Bauhöhe 75,5 mm
 Bautiefe gesamt 35 mm



Primärstrom [A]	Bürde [VA]	Sekundärstrom [A] / Klasse			
		5 A Kl. 1 Best.-Nr.	5 A Kl. 0,5 Best.-Nr.	1 A Kl. 1 Best.-Nr.	1 A Kl. 0,5 Best.-Nr.
1	2,5	10030017	10030011	10030217	10030211
	5	10030018		10030218	
2,5	2,5	10030019	10030012	10030219	10030212
	5	10030020		10030220	
5	2,5	10030021	10030013	10030221	10030213
	5	10030022		10030222	
10	2,5	10030023	10030014	10030223	10030214
	5	10030024		10030224	
15	2,5	10030025	10030015	10030225	10030215
	5	10030026		10030226	
20	2,5	10030027	10030016	10030227	10030216
	5	10030028		10030228	

		Best.-Nr.
	Schnappbefestigung Form A	10053011
	Plombierplatte Form A	10059040

Anschlussquerschnitt primär: max 4 mm² mit Aderendhülse, 6 mm² massiv